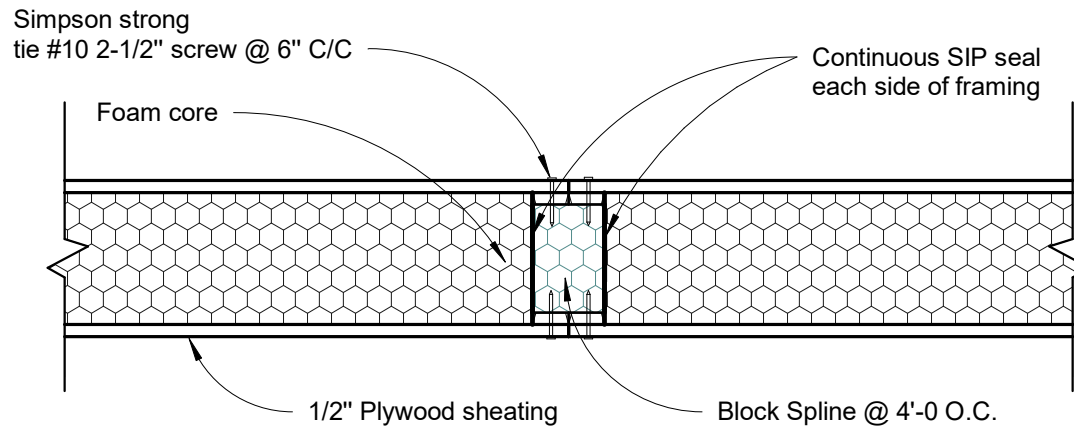


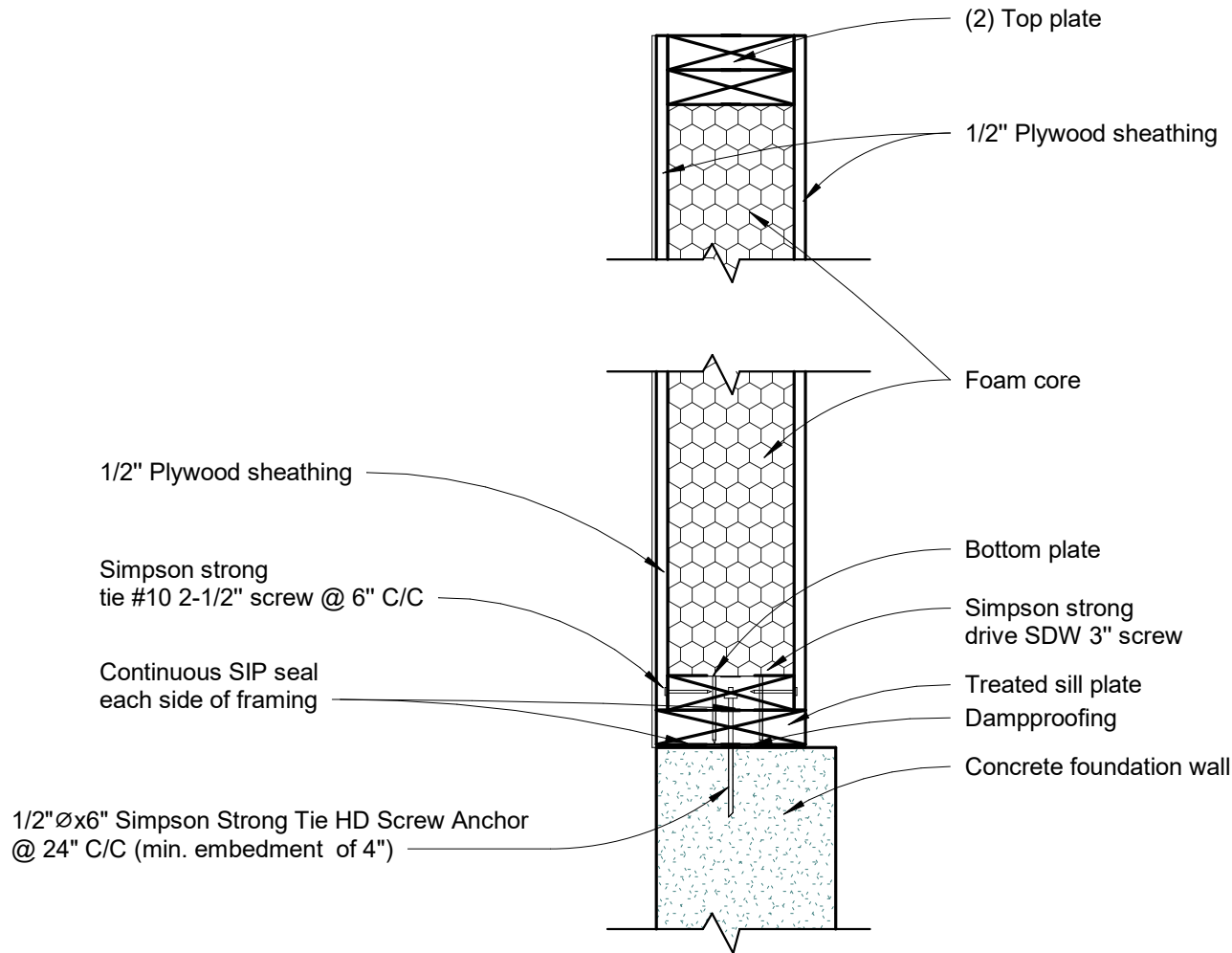
ALL SIP JOINTS SHALL BE AIR SEALED WITH SIP SEAL AND/OR SIP SEAL VAPOR TAPE. FOLLOW SIP MANUFACTURER'S RECOMMENDATIONS FOR SIP TAPE WIDTHS AND SEALANT PATTERN AND THICKNESSES

- ① LUMBER SPLINE CONNECTION  
1 1/2" = 1'-0"



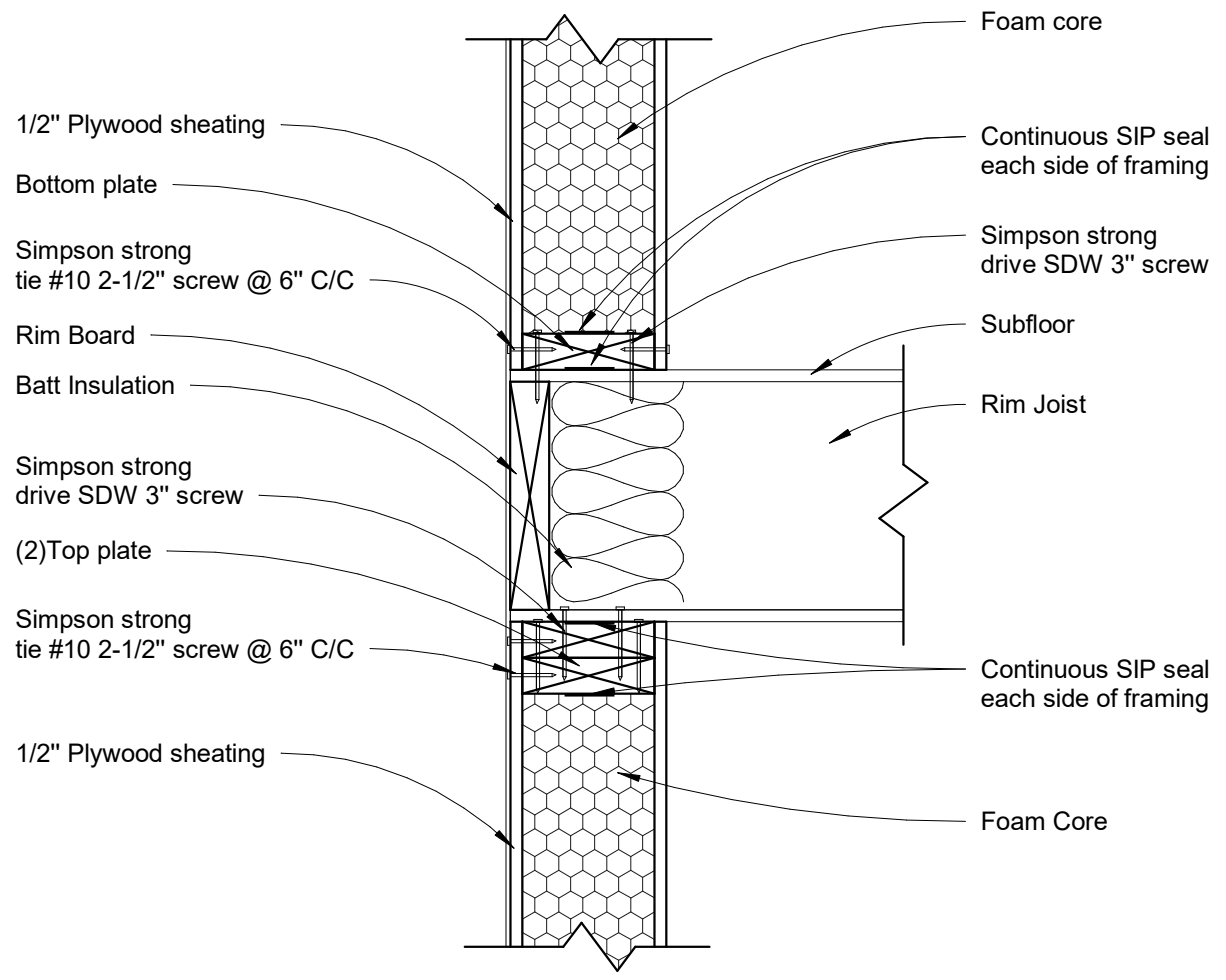
ALL SIP JOINTS SHALL BE AIR SEALED WITH SIP SEAL AND/OR SIP SEAL VAPOR TAPE. FOLLOW SIP MANUFACTURER'S RECOMMENDATIONS FOR SIP TAPE WIDTHS AND SEALANT PATTERN AND THICKNESSES

- ① **BLOCK SPLINE CONNECTION**  
1 1/2" = 1'-0"



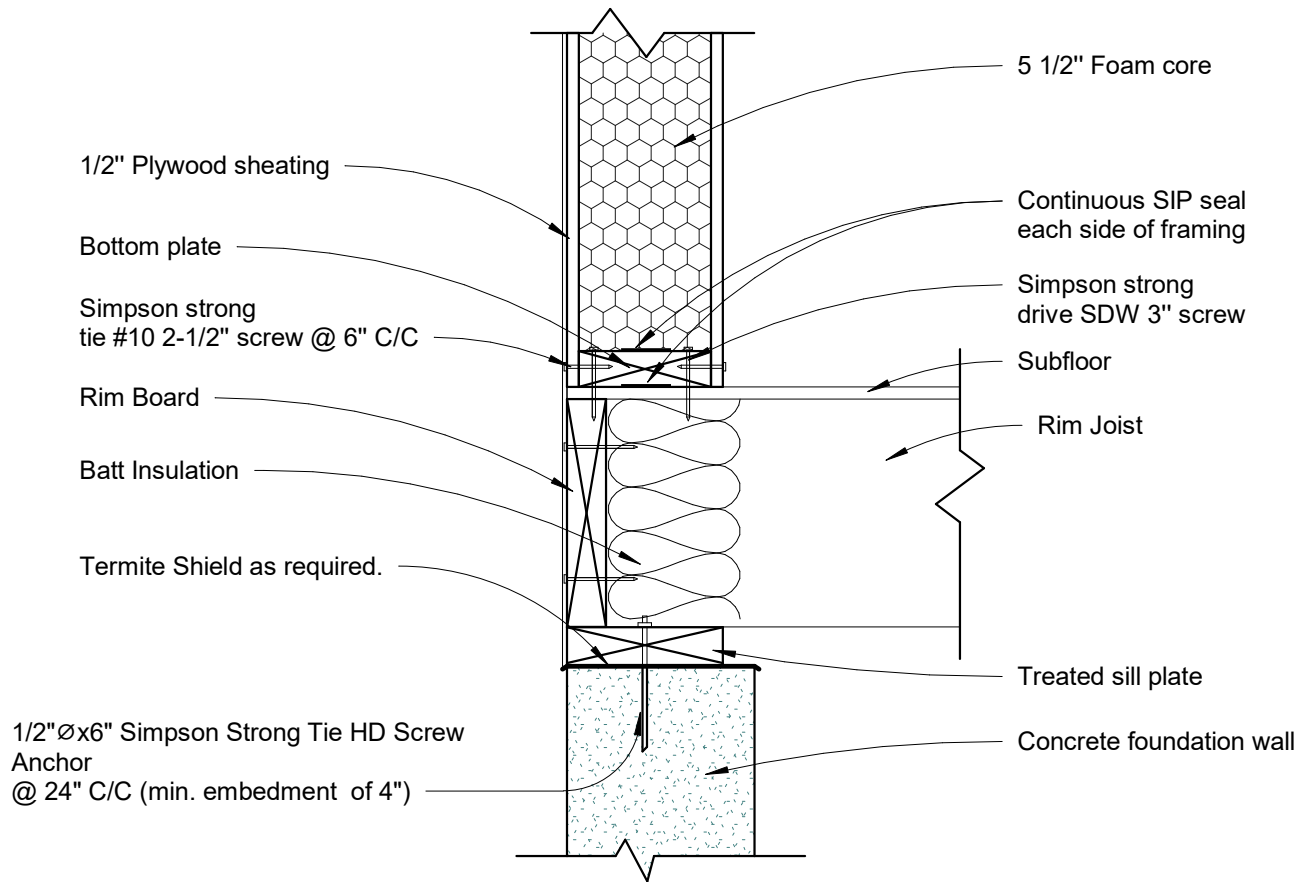
ALL SIP JOINTS SHALL BE AIR SEALED WITH SIP SEAL AND/OR SIP SEAL VAPOR TAPE. FOLLOW SIP MANUFACTURER'S RECOMMENDATIONS FOR SIP TAPE WIDTHS AND SEALANT PATTERN AND THICKNESSES

① SLAB ON GRADE CONNECTION  
1 1/2" = 1'-0"



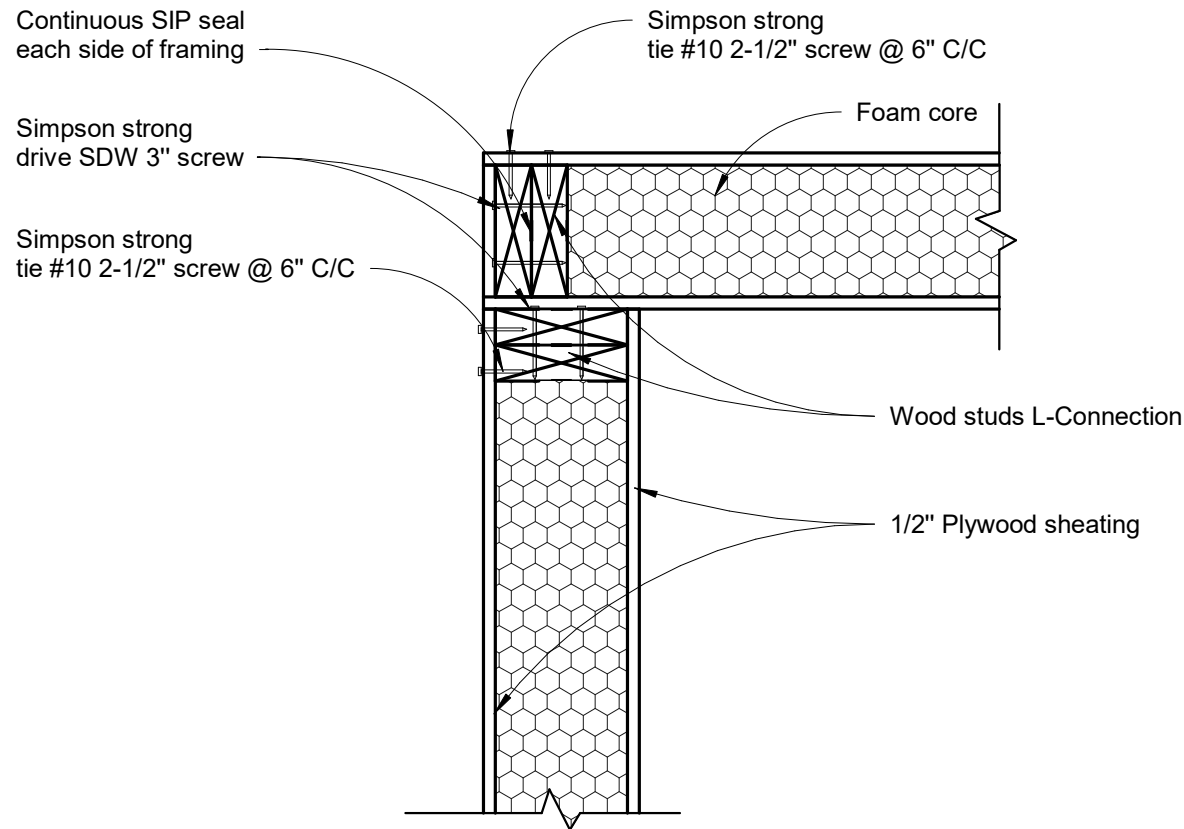
ALL SIP JOINTS SHALL BE AIR SEALED WITH SIP SEAL AND/OR SIP SEAL VAPOR TAPE. FOLLOW SIP MANUFACTURER'S RECOMMENDATIONS FOR SIP TAPE WIDTHS AND SEALANT PATTERN AND THICKNESSES

① **SECOND FLOOR CONNECTION**  
1 1/2" = 1'-0"



ALL SIP JOINTS SHALL BE AIR SEALED WITH SIP SEAL AND/OR SIP SEAL VAPOR TAPE. FOLLOW SIP MANUFACTURER'S RECOMMENDATIONS FOR SIP TAPE WIDTHS AND SEALANT PATTERN AND THICKNESSES

① FOUNDATION CONNECTION  
1 1/2" = 1'-0"

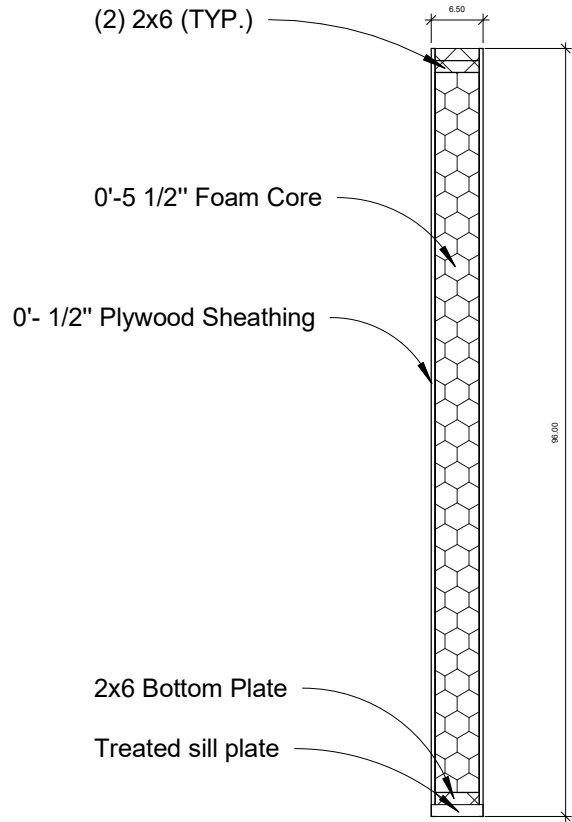


ALL SIP JOINTS SHALL BE AIR SEALED WITH SIP SEAL AND/OR SIP SEAL VAPOR TAPE. FOLLOW SIP MANUFACTURER'S RECOMMENDATIONS FOR SIP TAPE WIDTHS AND SEALANT PATTERN AND THICKNESSES

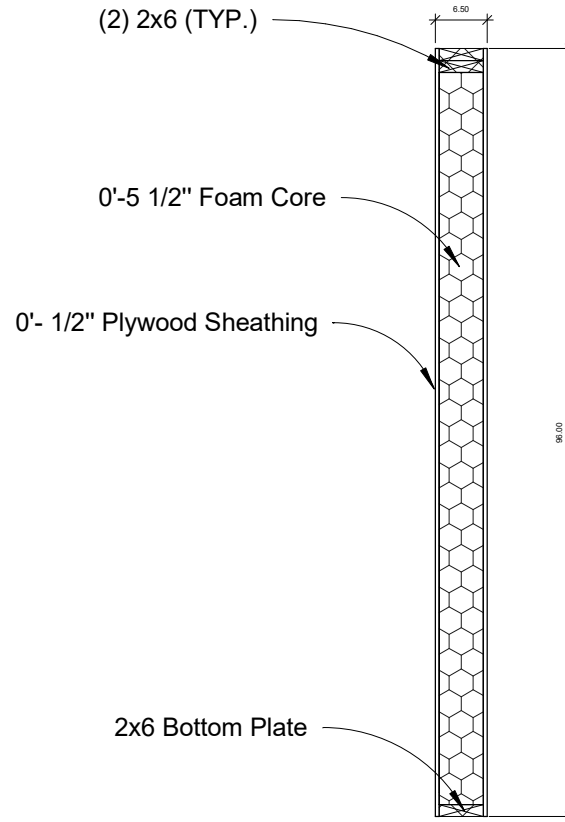
③ L WALL-CONNECTION  
1 1/2" = 1'-0"

**WALL SECTION**

Stamps



① 6" SIP WALL DETAILS ON CONC. SLAB  
1/2" = 1'-0"



② 6" SIP WALL DETAILS  
1/2" = 1'-0"